

April '90

# Forget-Me-Clock

## II

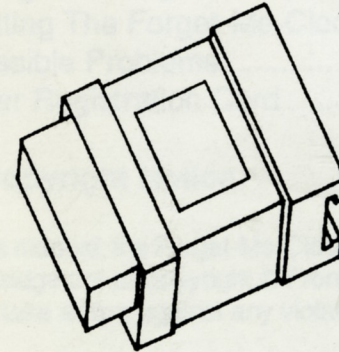
### *User Manual*

Addendum Included



Frontier Software

P.O. Box 113, Harrogate,  
North Yorkshire, England HG2 0BE.  
Phone (0423) 567140/530577. Fax (0423) 522874.



Frontier Software

© Frontier Software 1990

Frontier  
P.O. Box 113  
Harrogate  
North Yorkshire  
England HG2 OBE.  
(0423) 567140/530577.  
Fax (0423) 522874.

• **Index**

Copyright Notice .....	2
Disclaimer .....	2
Ten Day Money Back Guarantee .....	3
Guarantee .....	3
Introduction .....	4
Plugging In The Forget-Me-Clock II .....	4
Using The Forget-Me-Clock II To Set System Time .....	5
Setting The Forget-Me-Clock II's Time And Date .....	5
Possible Problems .....	6
User Registration Card .....	8

• **Copyright Notice**

This manual, the Forget-Me-Clock II software and the Forget-Me-Clock cartridge are all copyright © Frontier Software 1990. Frontier Software will take action against any violation of its copyrights.

• **Disclaimer**

Frontier Software does not assume any liability for any consequential damage caused by the use of the Forget-Me-Clock II or included software. Frontier Software also does not assume any liability for any damages caused during or as a result of installing the Forget-Me-Clock cartridge or resulting from parts not supplied by Frontier Software.

## • Ten Day Money Back Guarantee

The Frontier Forget-Me-Clock II is covered by a ten day money back guarantee. This means that if the Forget-Me-Clock II (including cartridge, all software, disk, box, manual and other items supplied with the cartridge) are returned to the supplier in their original saleable condition then the supplier will offer a complete refund on the purchase price. In no way will Frontier accept the return of items for a ten day money back guarantee if they are not in their original condition (this includes *all* items supplied in the outer packaging and the outer packaging itself). Any soldering or other electronic changes made to the circuit board will immediately void the ten day money back guarantee and will also immediately void the normal twelve month guarantee. There will be *no* exception to this.

## • Guarantee

Frontier Software guarantee the Forget-Me-Clock II cartridge to be free from defects in materials and workmanship for a period of twelve months (and the battery for twenty four months) from the date of purchase by the user. If any parts or equipment becomes defective during this period Frontier Software will repair or replace them without any charge. If it is deemed by Frontier Software that the part(s) are defective through misuse, neglect or accident, then the repair or replacement will be undertaken at normal repair charges for material and labour.

## • Introduction

Congratulations on buying the Forget-Me-Clock II clock cartridge for your Atari ST.

Using the Forget-Me-Clock II you will no longer have to worry about setting your ST's system and keyboard clocks every time you turn on or reset your ST. The Forget-Me-Clock II also has the unique feature of a pass through cartridge port so that you can use it simultaneously with any other cartridge made for the Atari ST.

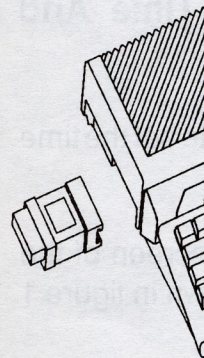
Included with the Forget-Me-Clock II is a disk which contains all of the software you will need to use your new purchase.

## • Plugging In The Forget-Me-Clock II

The Forget-Me-Clock II cartridge plugs into the cartridge port on the left hand side of your ST.

### TURN YOUR ST OFF

Plug in the cartridge with the red "Do Not Plug In This Way Up" label facing downwards (so that you cannot see it when the cartridge is plugged in). Make sure that the cartridge is plugged in firmly and is fitting squarely with the edge of the ST. **Never** plug the cartridge into your ST with the ST turned on.



Now you can plug in any other ST cartridge into the Forget-Me-Clock II's cartridge port that you may wish to use when you turn your

ST on.

## • Using The Forget-Me-Clock II To Set The System Time

Turn your ST on with the Forget-Me-Clock II cartridge plugged into the cartridge port and with the Forget-Me-Clock II utilities disk in drive A. The Auto run program on this floppy disk will load and will inform you of the current time and date settings of the Forget-Me-Clock II. The Auto run program will also load the ST's System and Keyboard clocks with the correct settings.

(If this is the **first time that you have used the Forget-Me-Clock II**, you will be told that the clock is not running and that you should set it using the provided setting software Forget-Me-Clock IIs are sent from the factory with the clock stopped to conserve the battery.)

If you wish, you can place the *FMCAUTO* program in an auto folder on any of your boot up disks or on your auto booting hard disk.

## • Setting The Forget-Me-Clock II's Time And Date

The *FMCI* program on the utilities disk is used to set the time and date of the Forget-Me-Clock II.

Clicking on the **OK** button from the opening screen of the *FMCI* program will take you to the dialog shown in figure 1 (over the page).

Clicking on the arrows will move the settings up or down. When you have set the time and date to the correct values, click on the **SET** button to set the Forget-Me-Clock II. Click on **REREAD** to make sure that the Forget-Me-Clock has been set correctly.

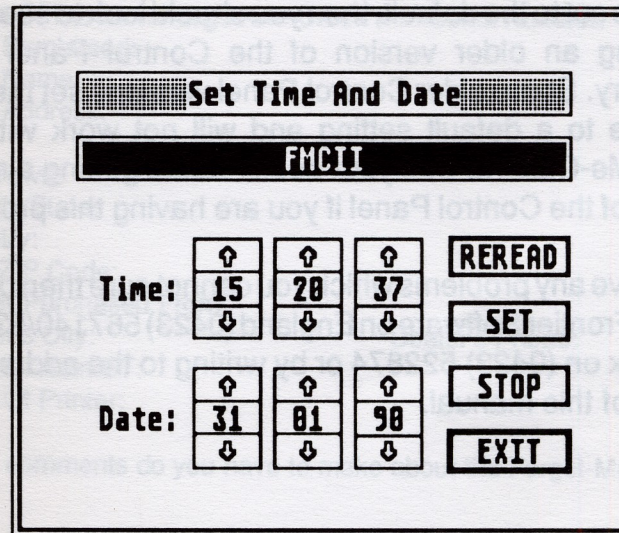


Figure 1.

Clicking on the **STOP** button will stop the Forget-Me-Clock II clock. This can be used to save the Forget-Me-Clock II's battery power when you do not intend to use the Forget-Me-Clock for a while. Using the **SET** button will restart the clock.

## • Possible Problems

If you find that your ST crashes during boot up or that you cannot properly use the cartridge plugged into the Forget-Me-Clock II's pass-through connector, you should turn off

your ST and check that the Forget-Me-Clock II and the other cartridge are firmly and squarely plugged into the ST and into each other.

If you find that despite having the Forget-Me-Clock II auto-run program automatically set the time at boot-up, the clock is always set to the default, then you should look to see if you are using an older version of the Control Panel desk accessory. Some older Control Panel versions set the time and date to a default setting and will not work with the Forget-Me-Clock II. See your dealer about getting a newer version of the Control Panel if you are having this problem.

If you have any problems which you cannot cure then please contact Frontier Software on England (0423) 567140/530577 or by Fax on (0423) 522874 or by writing to the address on Page 2 of this manual.

## • User Registration

Please fill in this form so that we can support you as the user of one of our products. Also your comments would be very welcome.

Name Of Product: **Forget-Me-Clock II** Serial Number:

Date Purchased:

Your Name:

Your Address:

City/Town:

County/State:

Country:

Post/ZIP Code:

Dealer Purchased From:

Dealer's City:

Dealer's Phone:

Type Of Atari ST:

Type Of Printer:

What comments do you have to make about the Forget-Me-Clock II?

Which other cartridges do you use with your ST?

Where did you find out about our products?

Which computer magazines do you read?

What product(s) would you like Frontier to develop in the future?