



飛宏企業股份有限公司
PHIHONG ENTERPRISE CO., LTD.

PHIHONG ENTERPRISE CO., LTD.
SWITCHING POWER SUPPLY
SPECIFICATION

MODEL: PSM-5341
DWG NO: PES10442
PART NO: C301379-001

ISSUED: 03-10-90
REV A : 09-20-90

1. Input

- 1.1 AC Input voltage: 100-240 VAC (Universall)
1.2 AC Input frequency: 50 Hz to 60 Hz
1.3 Ac Input current: 2 A (RMS) for 120 VAC
1 A (RMS) for 240 VAC
1.4 Max. In-rush current: 20 A for 120 VAC
40 A for 240 VAC

2. Output

	Output1	Output2	Output3	Output4
2.1 O/P voltage:	+5 VDC	+12 VDC	-12 VDC	-5 VDC
2.2 Min load current:	2 A	0.2A	0 A	0 A
2.3 Max load current:	7 A	2 A	0.3A	0.4A
*2.4 Total regulation:	+5%-4%	+5%	+10%	+5%
2.5 Ripple and noise:	100 mVp-p	120mVp-p	120mVp-p	120mVp-p

- * Peak current: 1) +12V 2.5A for 10 seconds max on power up.
2) All other output are full load.

3. Overall Performance

- 3.1 Total output power: 64.6W
3.2 Efficiency: 65% typical at full load at input 240VAC.
*3.3 Power up time: 5 sec for all output voltages to be within regulation limit.
3.4 Hold up time: 10 mSec at max load and input 120VAC
3.5 Power good signal: The power good signal will come on at least 100ms after all voltage are good, but not longer than 500 ms after that point.



飛宏企業股份有限公司
PHIHONG ENTERPRISE CO., LTD.

3.6 Power fail: TTL compatible output signal to go low at least 1mS before +5V below 4.8V.

3.7 Switching frequency: 50 KHz typical.

3.8 Temperature coefficient: $\pm 0.05\%$ per $^{\circ}\text{C}$.

4. Features

4.1 Over current protection: All output equipped with short circuit protection.

*If any output becomes overloaded, the power supply should switch off within 20 mSec. an overcurrent condition will not damage power supply.

4.2 Over shoot: (5% of the nominal output voltage) at turn on and off, outputs shall not exceed the limit.

5. Environmental

5.1 Operating temperature: 0°C to 50°C .

5.2 Cooling: air force convection.

5.3 Humidity: 90% RH.

5.4 Storage Temperature: -40°C to $+70^{\circ}\text{C}$.

5.5 Storage Humidity: 90% RH.

6. Safety standard

6.1 Designed to meet the

Standards of: UL 478, 1012 CSA 22.2, 154 VDE 0806

7. EMI standards

7.1 Meets the conduction limits of:

- (a) FCC part 15 class B rules.
- (b) VDE 0871 6.78 class B.

8. Dielectric withstand (HIPOT) test

8.1 Input to output: 1800 VAC 20mA 1 SEC.

9. Insulation resistance

9.1 Input to output: 7 Mohm min.

9.2 Input to ground: 7 Mohm min.



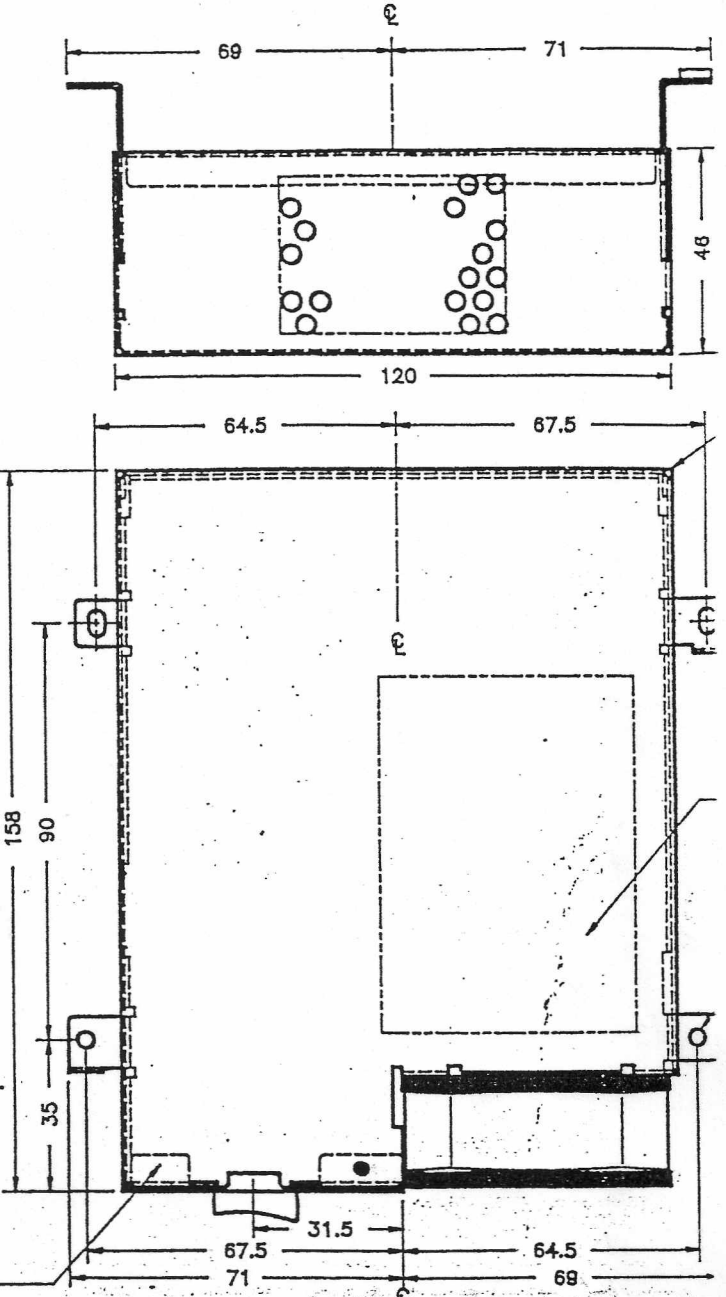
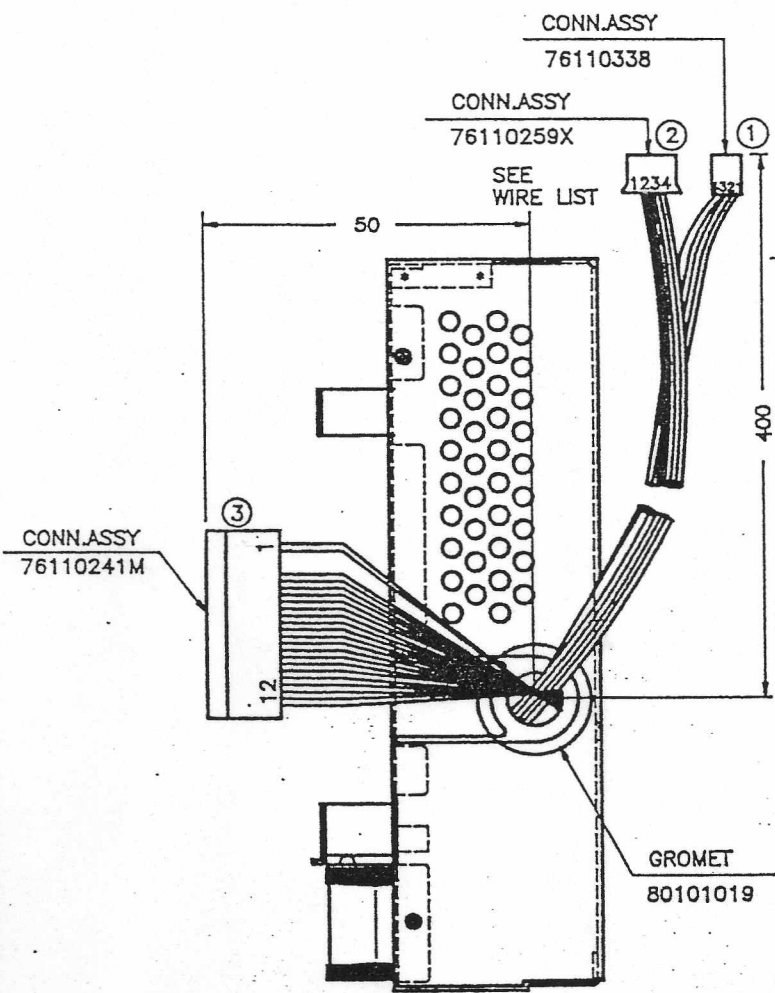
飛宏企業股份有限公司
PHIHONG ENTERPRISE CO., LTD.

10. Reliability

10.1 Mean time between failure: 20K hrs.min. at full load for a
25°C ambient temperature.

3 of 3 / 442

1 2 3 4 5 6 7 8 9 10 11



① WIRE LIST

PIN	COLOR	AWG	OUTPUT
1	YELLOW	20	+12V
2	BLACK	1	GND
3	BLACK	1	GND
4	RED	20	+5V

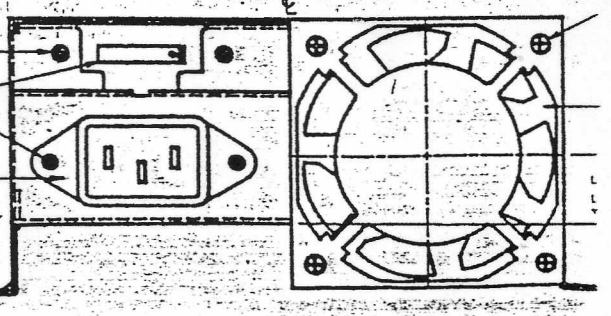
②

1	YELLOW	18	+12V
2	BLACK	1	GND
3	BLACK	1	GND
4	RED	18	+5V

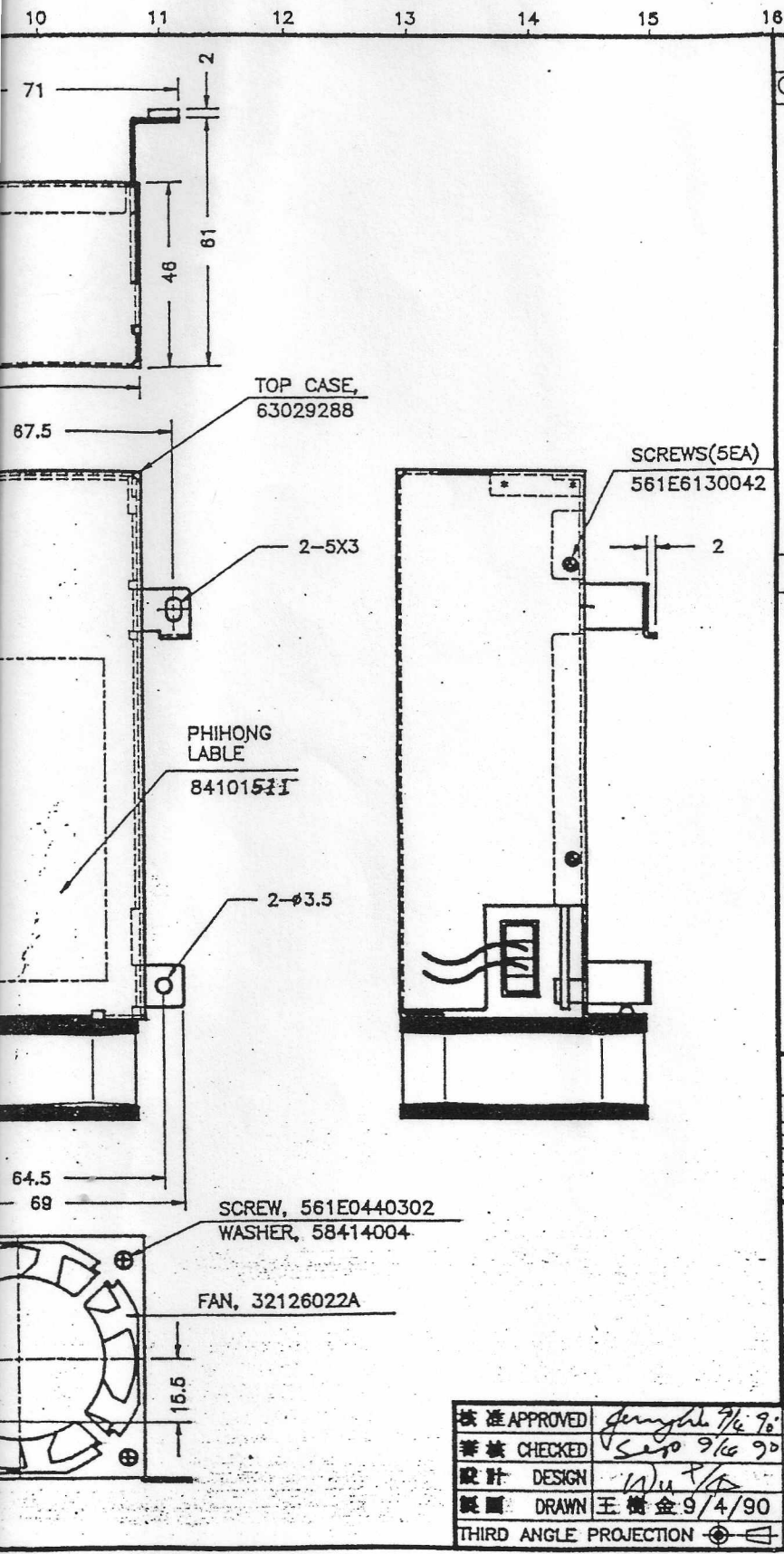
③

1	ORANGE	18	POWER GOOD
2	OPEN	1	
3	YELLOW	1	+12V
4	BLACK	1	-12V
5	BLACK	1	GROUND
6	BLACK	1	GROUND
7	BLACK	1	GROUND
8	BLACK	1	GROUND
9	WHITE	1	-5V
10	RED	1	+5V
11	RED	1	+5V
12	RED	18	+5V

- BOT CASE 63029289A
- SCREW 56110430062
- SWITCH 24130031
- SCREW 561C0330082
- INLET 30206013



1/6-9/0



修正 REVISIONS
CHECK & ISSUE 9/4/90

說明 GENERAL NOTES

長度單位 DIMENSION	容許公差單位(MM) COMMON TOLERANCE			
	A	B	C	D
低於 0.25mm	±0.05	±0.1	±0.15	±0.2
0.25 - 0.5	±0.05	±0.1	±0.15	±0.2
0.5 - 1.0	±0.05	±0.1	±0.15	±0.2
1.0 - 2.0	±0.05	±0.1	±0.15	±0.2
2.0 - 5.0	±0.1	±0.15	±0.2	±0.25
5.0 - 10.0	±0.15	±0.2	±0.25	±0.3
10.0 - 20.0	±0.2	±0.25	±0.3	±0.35
20.0 - 50.0	±0.3	±0.35	±0.4	±0.45
50.0 - 100.0	±0.4	±0.45	±0.5	±0.55

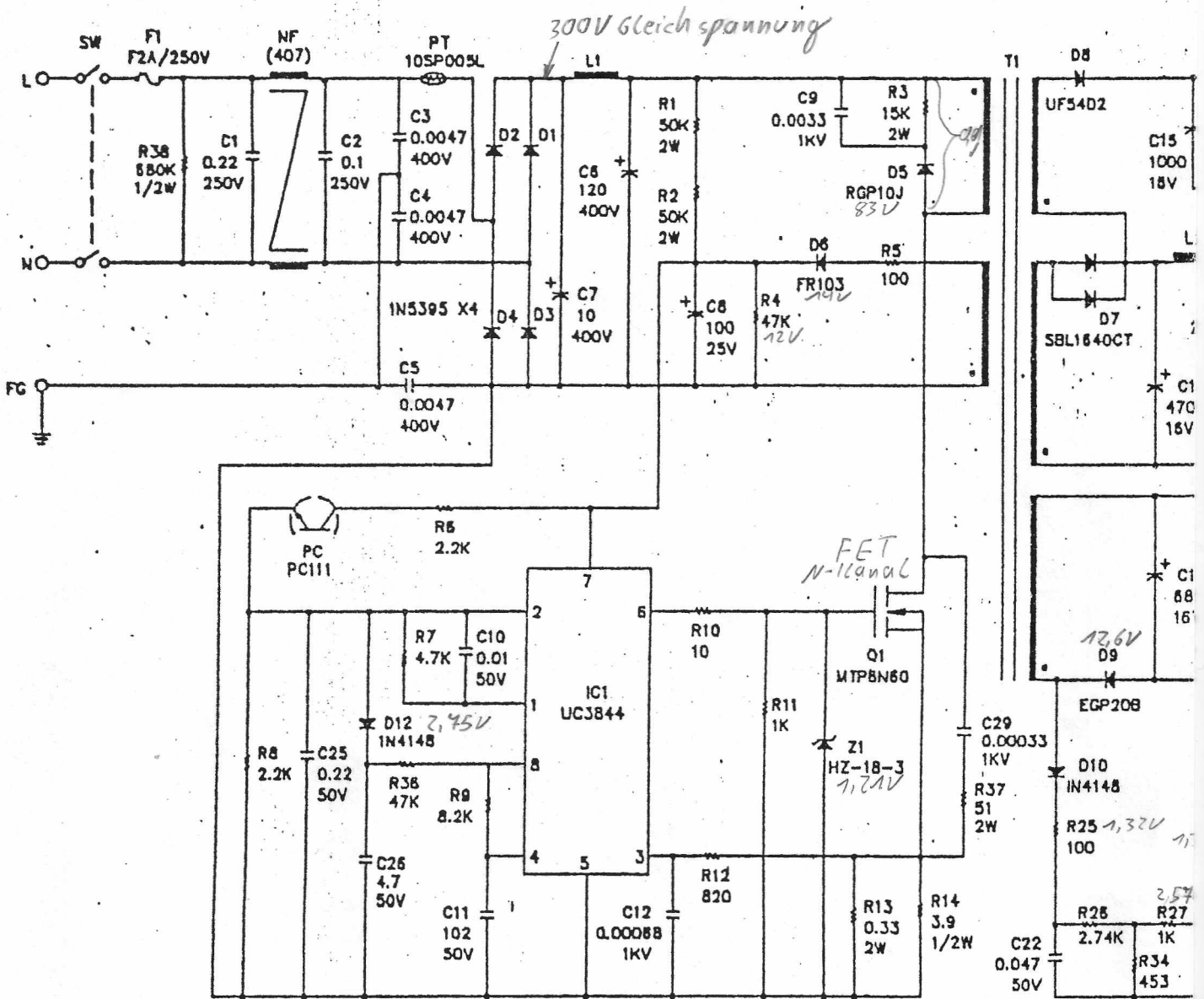
飛宏企業股份有限公司
PHIHONG ENTERPRISE CO., LTD.

機種 MODEL PSM-5341
材質 MATERIAL SECC
處理 TREATMENT 材質本色(灰色)

核准 APPROVED *Jerry* 9/4/90
審核 CHECKED *Sepo* 9/4/90
設計 DESIGN *Wu* 9/4/90
製圖 DRAWN 王樹金 9/4/90
THIRD ANGLE PROJECTION

公差 TOLERANCE B
比例 SCALE X
單位 UNIT MM
圖名 DESCRIPTION MODEL OUTLINE DIAGRAM
PES00234 A

SHEET OF



Pin 7-5 = 12.8V
 2-5 = 2.5V
 1-5 = 2.24V
 3-5 = 0.03
 4-5 = 1.95
 5-6 = 1.22
 5-8 = 4.98

* FACTORY ALIGNMENT

220VAC MIN. LOAD +5V REGULATION	R23	R24
5V - 5.15V	✓	✓
< 5 V	✓	X
>5.15V	X	✓

REVISIONS

01. PRELIMINARY	79.9.6
-----------------	--------

TT/MSTE

GENERAL NOTES

- ALL RESISTORS ARE 1/4W±5K UNLESS OTHERWISE INDICATED.
- ALL RESISTORS ARE IN OHM AND CAPACITORS ARE IN UF UNLESS OTHERWISE INDICATED.

SCHEMATIC

MODEL	PSM-5341	
DRAWN	AMY CHEN 79.9.6	
DESIGN	JUN P. 6	
SAFETY		
CHECKED	SUN Q. 6	
APPROVED	JUN P. 7	
DRAWING NO.		REV.
PES-30391		01

